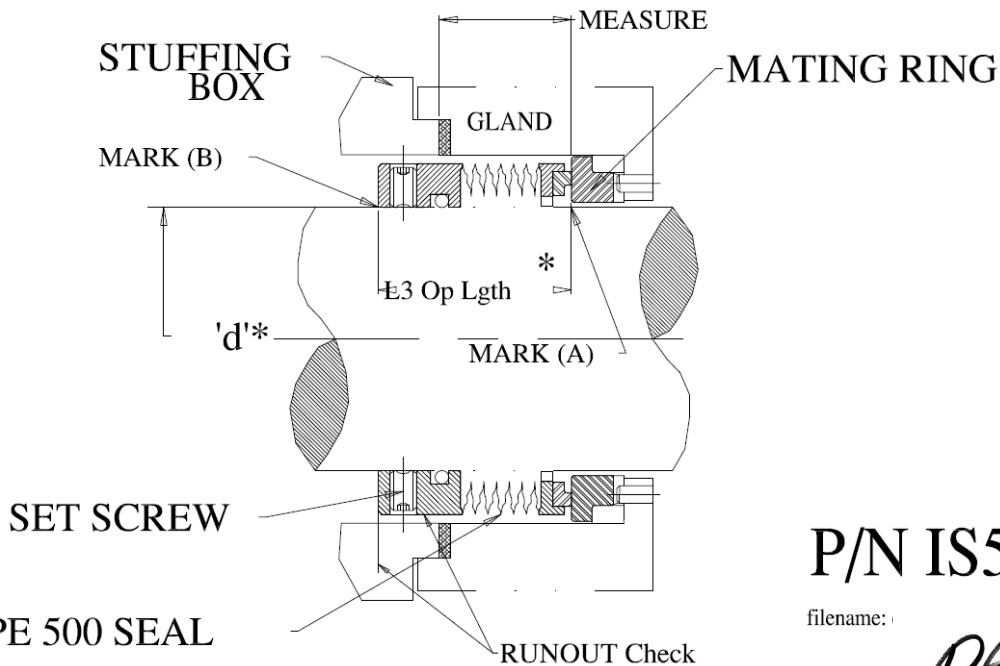


Installing Type 500 Seal

1. Make sure that shaft step is free from burrs and that shaft surface is smooth.
2. Mark on the shaft the axial location of the mating ring face at location (A), as measured from the stuffing box face.
3. After removal of the stuffing box, mark location (B) to establish the axial location of the back end of the seal. If an integral shoulder or a sleeve already exists, verify cleanliness and condition.
4. Install the seal and tighten the set screws. Verify with an indicator that the back of the seal run out do not exceed 0.2 mm (0.008").
5. Install the stuffing box. Do not forget to assemble all necessary o-rings or other packing materials before tightening of the screws.
6. After verifying that the seal faces are clean, slide the mating-ring assembly into contact with the seal face and lock the assembly.



TYPE 500 SEAL

P/N IS500

filename:)

1



p/n IS500E Sheet 1 of 1 , Revision __, Date 19Oct10 , Approval

Filename: C:\Documents And Settings\Shmuel\Desktop\Web Site\Installation Instructions\IS500E.Doc