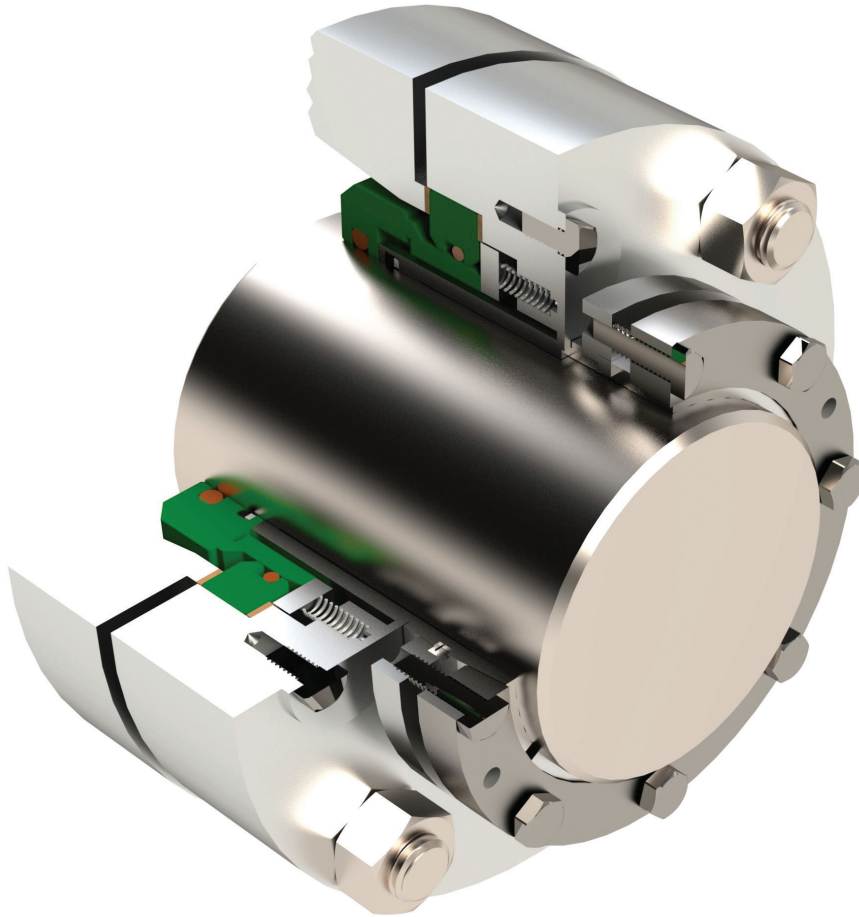
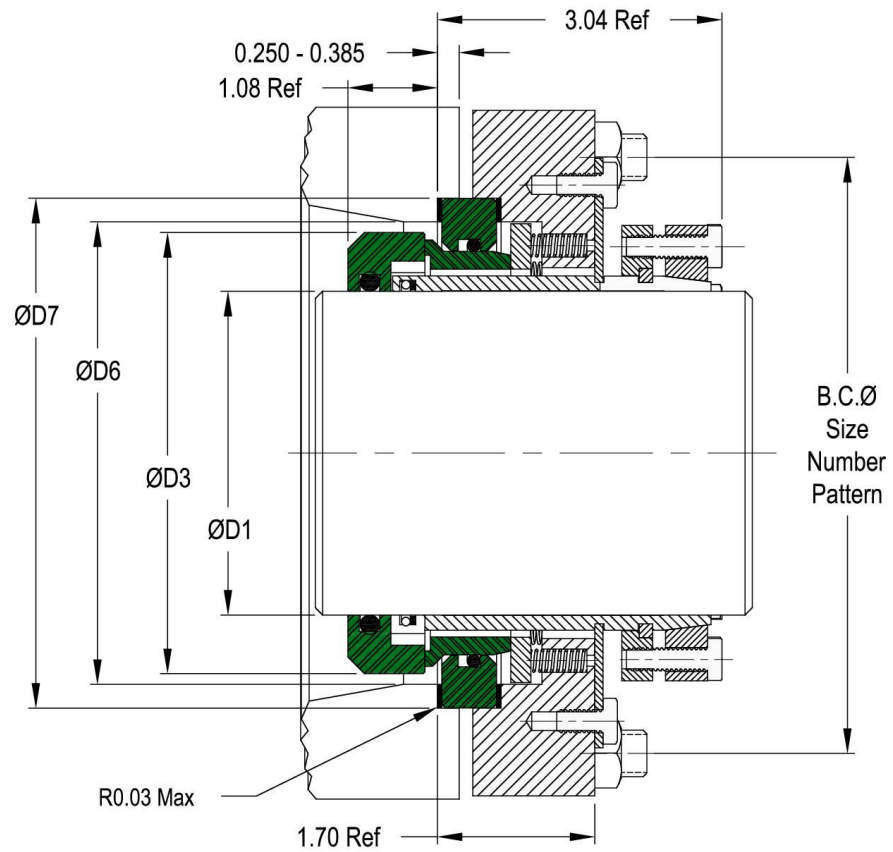


# Type 210 Seal



- Unique Internal Cartridge Seal for highly corrosive fluids.
- Tribological components and o-rings shield all other parts from process fluid – a feature previously reserved for External Seals only.
- Internal mounting of faces facilitate superior performance in the presence of suspended abrasive solids.
- Robust design for heavy duty service.
- Seal housing and bolting arrangement is equipment specific.
- Temperature, pressure and speed limits are application and materials dependent.

# Type 210 Seal



## Construction Materials

### Metal Parts

- 316 SST – Standard
- Hastelloy C
- SuperDuplex and Specials
- Standard Hastelloy C Springs

### Secondary Seals

- FluoroCarbon (Viton® or Equal)
- Ethylene Propylene
- NBR and Specials
- FFKM (Kalrez® or Equal)

### Seal Ring Faces

- Silicon Carbide - standard
- Tungsten Carbide
- Electro-Graphite
- Specials

## Imperial Series

D1 <sup>+0.000</sup> <sub>-0.002</sub>	D3 <sub>Ref</sub>	D6 <sub>±0.03</sub>	D7 <sub>±0.005</sub>
2.000	3.184	3.480	4.032
2.125	3.309	3.587	4.157
2.250	3.434	3.712	4.282
2.375	3.559	3.855	4.409
2.500	3.684	3.960	4.538
2.625	3.753	4.114	4.654
2.750	4.018	4.314	4.788
2.875	4.143	4.439	4.921
3.000	4.268	4.564	5.039
3.125	4.393	4.689	5.157
3.250	4.518	4.814	5.275
3.375	4.643	4.939	5.394
3.500	4.768	5.064	5.512
3.625	4.893	5.189	5.669
3.750	5.018	5.216	5.788
3.875	5.143	5.439	5.907
4.000	5.268	5.472	6.032

Other sizes available upon request

p/n PS210

Rev. A June 1, 2018

Disclaimer: Ettem Engineering reserves the right to change specifications without prior notification.



**Ettem Engineering SA Ltd**  
**Gevasol Group**

POBox 442, Acco 2410302, Israel  
Phone: 972-4-9810251  
ettemeng@ettem.com  
www.ettem.com