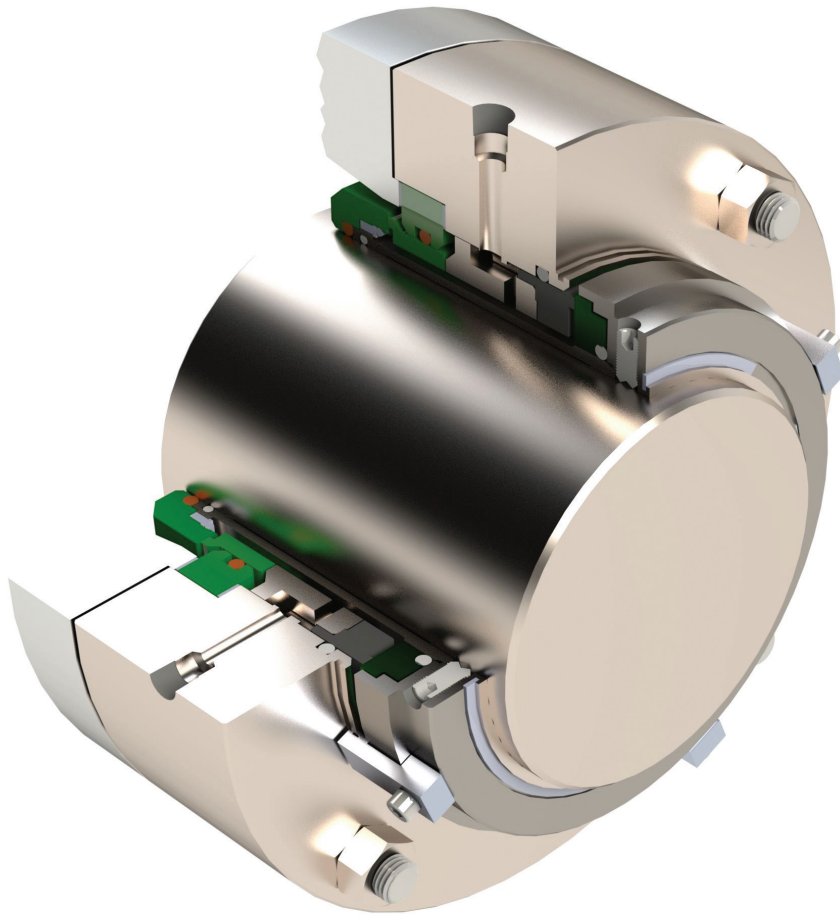
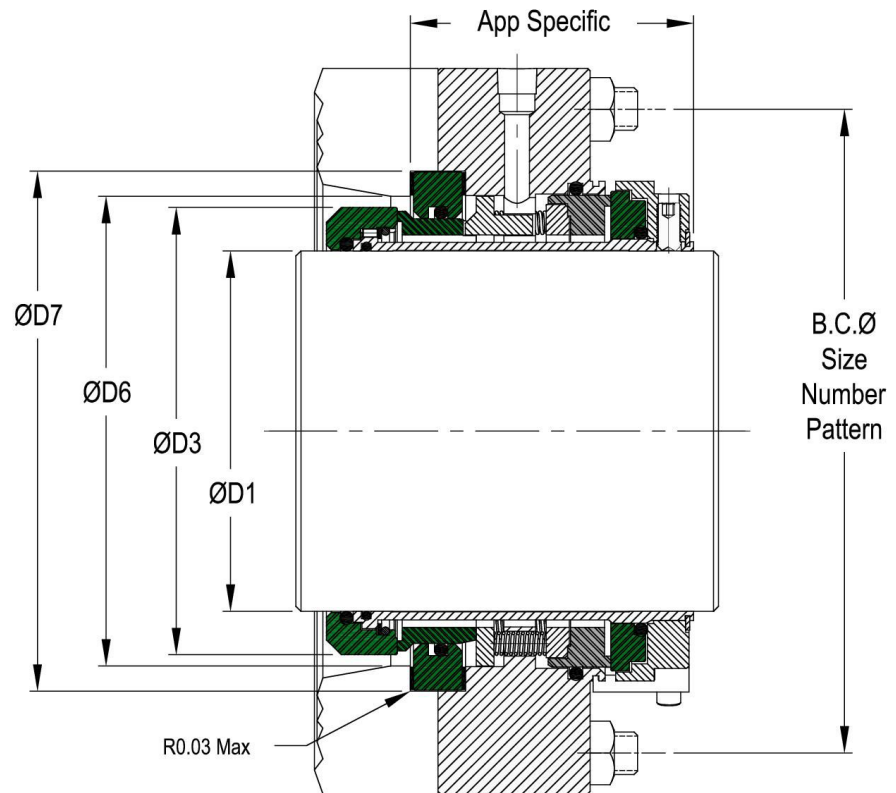


Type 210D Seal



- Unique Dual Cartridge Seal for highly corrosive fluids.
- Operation per API Plan 52 – unpressurized barrier fluid.
- Tribological components and o-rings shield all other parts from process fluid – a feature previously reserved for External Seals only.
- Internal mounting of faces facilitate superior performance in the presence of suspended abrasive solids.
- Robust design for heavy duty service.
- Seal housing and bolting arrangement is equipment specific.
- Temperature, pressure and speed limits are application and materials dependent.

Type 210D Seal



Construction Materials

Metal Parts

- 316 SST – Standard
- Hastelloy C
- SuperDuplex and Specials
- Standard Hastelloy C Springs

Secondary Seals

- FluoroCarbon (Viton® or Equal)
- Ethylene Propylene
- NBR and Specials
- FFKM (Kalrez® or Equal)

Seal Ring Faces

- Silicon Carbide - standard on process side
- Tungsten Carbide
- Electro-Graphite7
- Resin impregnated carbon-graphite
- Specials

Imperial Series

D1 $+0.000 -0.002$	D3 Ref	D6 ± 0.03	D7 ± 0.005
2.000	3.184	3.480	4.032
2.125	3.309	3.587	4.157
2.250	3.434	3.712	4.282
2.375	3.559	3.855	4.409
2.500	3.684	3.960	4.538
2.625	3.753	4.114	4.654
2.750	4.018	4.314	4.788
2.875	4.143	4.439	4.921
3.000	4.268	4.564	5.039
3.125	4.393	4.689	5.157
3.250	4.518	4.814	5.275
3.375	4.643	4.939	5.394
3.500	4.768	5.064	5.512
3.625	4.893	5.189	5.669
3.750	5.018	5.216	5.788
3.875	5.143	5.439	5.907
4.000	5.268	5.472	6.032

Other sizes available upon request

p/n PS210D
Rev. A June 1, 2018

Disclaimer: Ettem Engineering reserves the right to change specifications without prior notification.

Ettem Engineering SA Ltd
Gevasol Group

POBox 442, Acco 2410302, Israel
Phone: 972-4-9810251
ettemeng@ettem.com
www.ettem.com