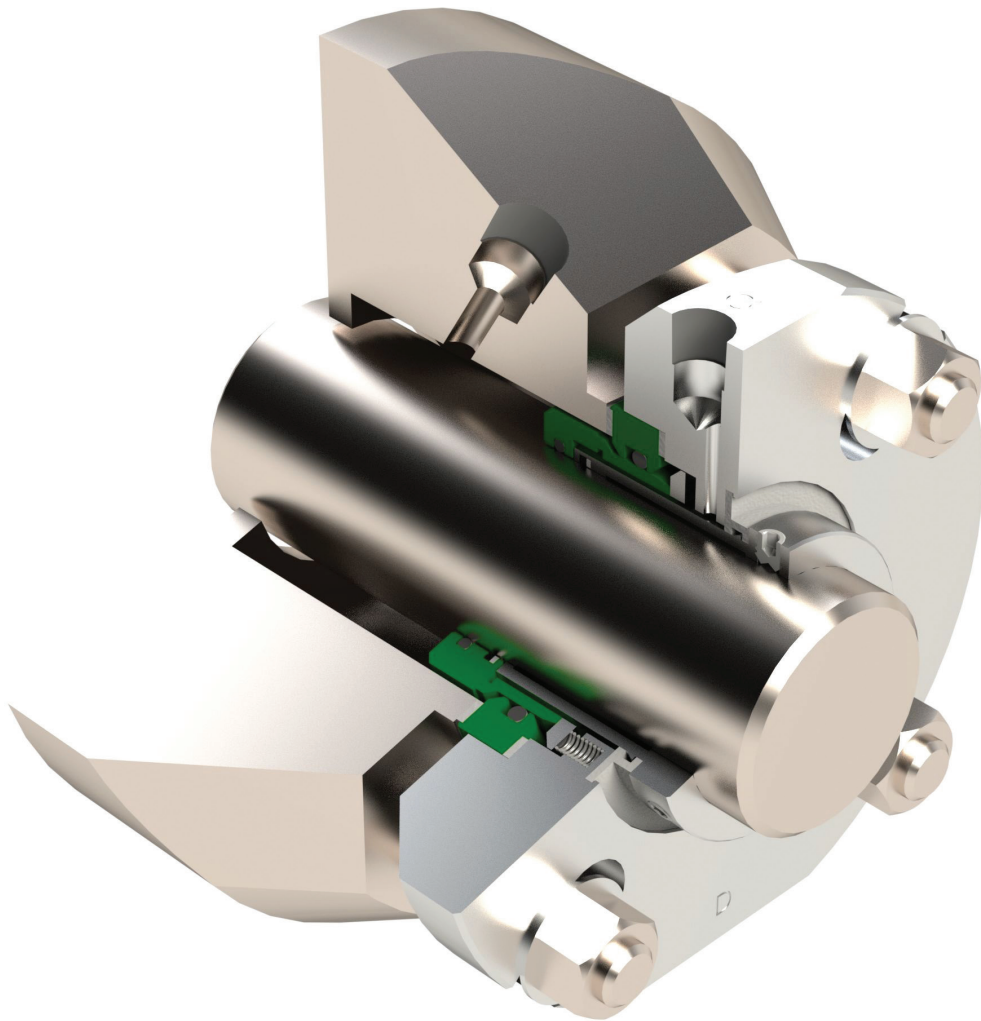
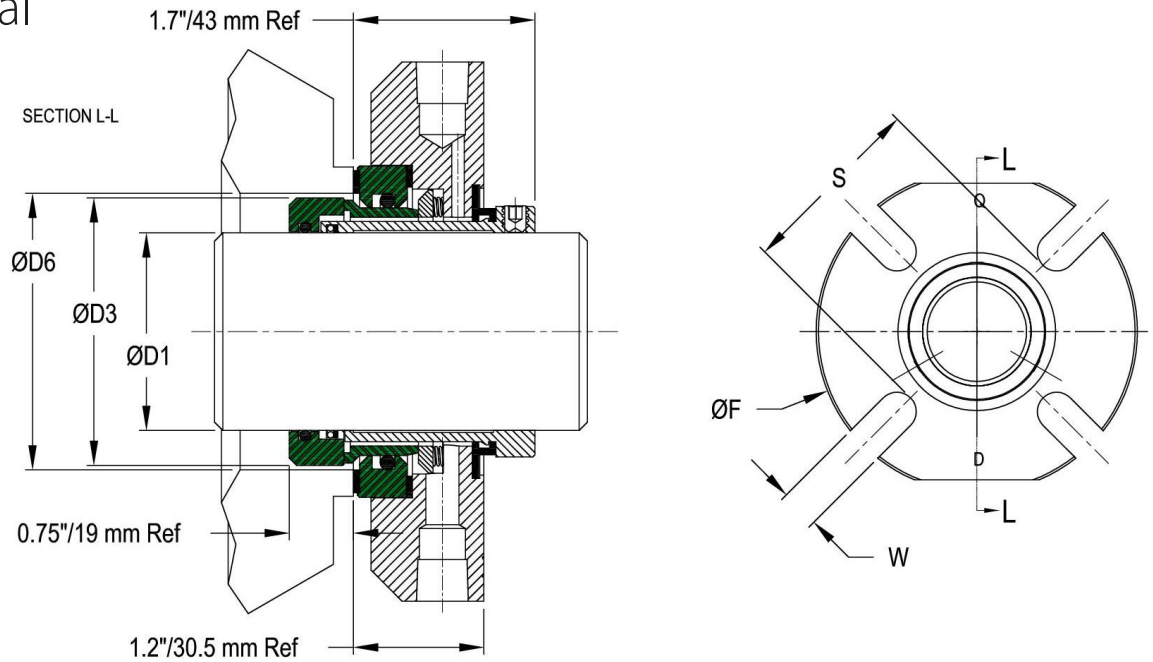


Type 210S Seal



- Unique Internal Cartridge Seal for highly corrosive fluids.
- Tribological components and o-rings shield all other parts from process fluid – a feature previously reserved for External Seals only.
- Internal mounting of faces facilitate superior performance in the presence of suspended abrasive solids.
- “Mount & Start” design – no setting tabs to be removed and lost.
- Narrow cross section for tight space.
- Temperature Range from -30°C to 300°C
- Pressure to 10 bar depending on Size and Operating Conditions
- Speed to 15 m/s depending on Size and Operating Conditions
- Type 210SOS for oversize seal chambers is available upon request

Type 210S Seal



Construction Materials

Metal Parts

- 316 SST – Standard
- Hastelloy C
- SuperDuplex and Specials
- Standard Hastelloy C Springs

Secondary Seals

- FluoroCarbon (Viton® or Equal)
- Ethylene Propylene
- NBR and Specials
- FFKM (Kalrez® or Equal)

Seal Ring Faces

- Silicon Carbide - standard
- Tungsten Carbide
- Electro-Graphite
- Specials

p/n PS210S

Rev. A June 1, 2018

Disclaimer: Ettem Engineering reserves the right to change specifications without prior notification.

Imperial Series

D1 ^{+0.000 -0.002}	D3 Ref	D6 Min	D6 Max	D7 Ref	F Ref	W Ref
1.125	1.125	1.125	1.125	1.125	2.45	0.55
1.250	1.912	2.000	2.250	3.94	2.61	0.55
1.375	1.965	2.000	2.250	4.50	2.74	0.55
1.500	2.162	2.262	2.512	4.50	2.86	0.55
1.625	2.287	2.387	2.637	4.85	2.99	0.67
1.750	2.412	2.512	2.762	5.42	3.11	0.67
1.875	2.537	2.637	2.887	5.54	3.24	0.67
2.000	2.662	2.762	3.012	5.54	3.36	0.67
2.125	2.787	2.887	3.137	5.83	3.49	0.71
2.250	2.912	3.012	3.262	5.90	3.61	0.71
2.375	3.037	3.137	3.387	5.90	3.74	0.71
2.500	3.161	3.261	3.511	6.49	4.10	0.71
2.625	3.406	3.506	3.756	6.29	4.53	0.67

Metric Series

D1 h6	D3 Ref	D6 Min	D6 Max	D7 Ref	F Ref	W Ref
28	45.4	48.6	54.6	89	63	14
30	48.6	51.7	57.7	100	66	14
32	48.6	51.7	57.7	100	66	14
33	51.7	54.9	60.9	114	70	14
35	50.0	50.8	56.8	114	70	14
38	54.9	58.1	64.1	114	73	14
40	58.1	61.3	67.3	123	76	17
42	61.3	64.4	70.4	138	79	17
43	61.3	64.4	70.4	138	79	17
45	61.3	64.4	70.4	138	79	17
48	64.4	67.6	73.6	141	82	17
50	67.6	70.8	76.8	141	85	17
53	70.8	74.0	80.0	148	89	18
55	74.0	77.1	83.1	150	92	18
60	77.1	80.3	86.3	150	95	18

Other sizes available upon request



Ettem Engineering SA Ltd
Gevasol Group

POBox 442, Acco 2410302, Israel
Phone: 972-4-9810251
ettemeng@ettem.com
www.ettem.com