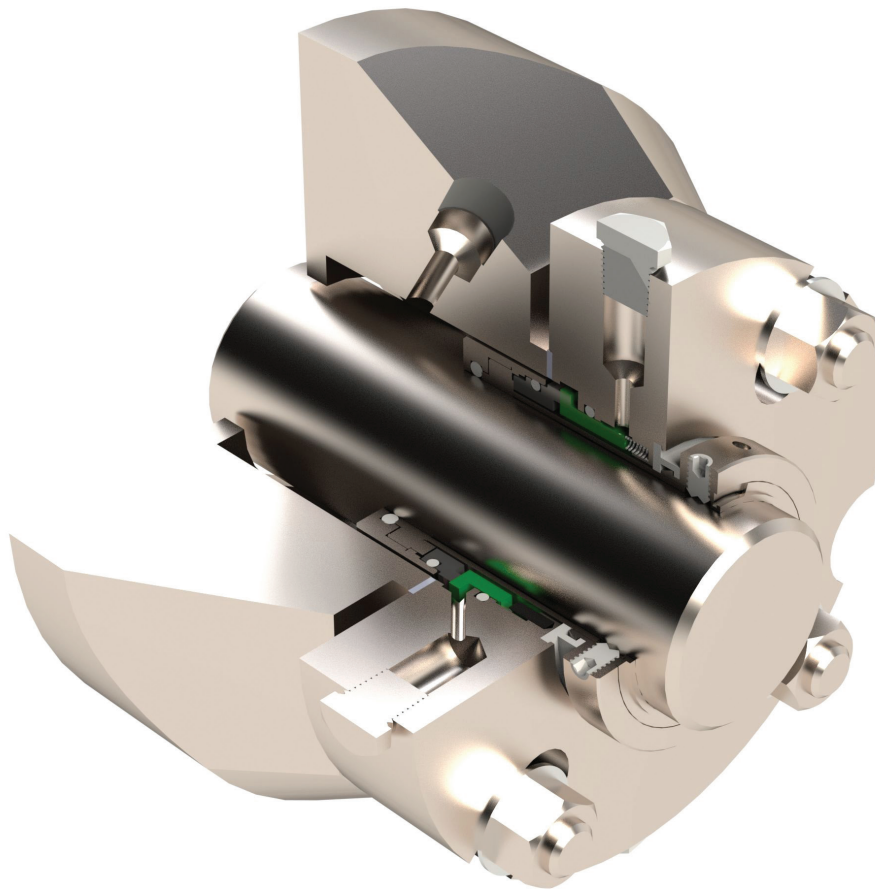
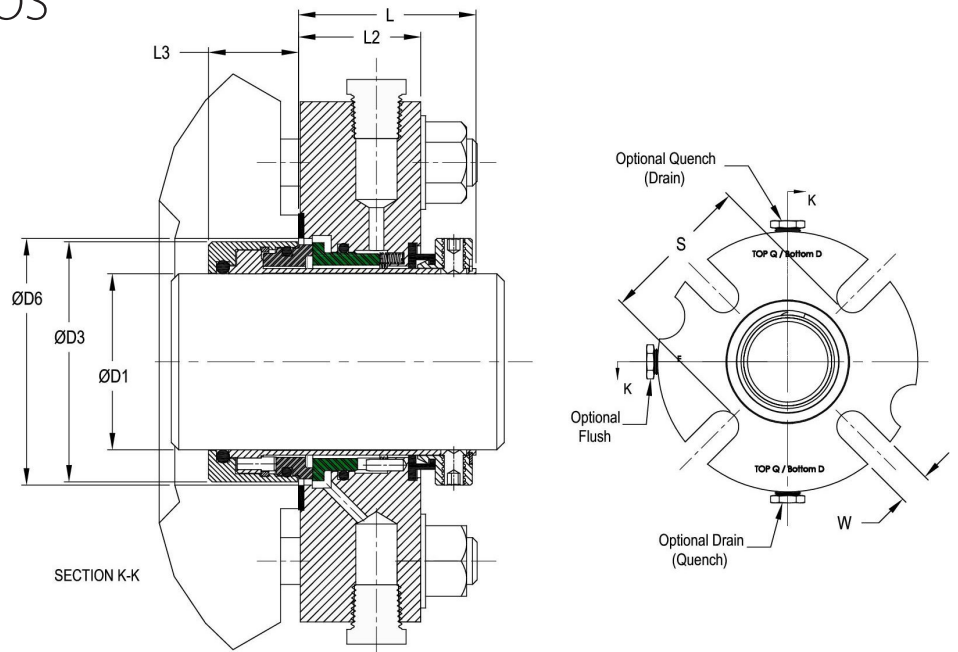


Type 230CQ/CQS/CQOS



- Heavy Duty Universal Cartridge Seal.
- Compact Design for Tight Radial and Axial Space.
- Temperature Range from -30°C to 300°C depending on Materials.
- Pressure vacuum to 40 bar depending on Size and Operating Conditions.
- Speed to 20 m/sec depending on Size and Operating Conditions.
- 230CQ for standard, 230CQS for tight and 230CQOS for oversize Seal Chambers.

Type 230CQ/CQS/CQOS



Construction Materials

Metal Parts

- 316 SST – Standard
- Hastelloy C
- SuperDuplex and Specials
- Standard Hastelloy C Springs

Secondary Seals

- FluoroCarbon (Viton® or Equal)
- Ethylene Propylene
- NBR and Specials
- FFKM (Kalrez® or Equal)

Seal Ring Faces

- Resin Impregnated Carbon-Graphite
- Tungsten Carbide
- Silicon Carbide
- Electro-Graphite
- Food/Drug Compatible Materials
- Specials

p/n PS230CQ

Rev. A June 1, 2018

Disclaimer: Ettem Engineering reserves the right to change specifications without prior notification.

Imperial Series

		Std Bore	Over Size	Std Bore	Over Size	Std Bore	Over Size	Std Bore	Over Size	Std Bore	Over Size
D1	D3 Ref	D6 Min		D6 Max		F Ref	S Ref		W Ref		
1.000	1.665	1.750	-	2.010	-	4.13	-	2.37	-	0.43	-
1.125	1.790	1.875	-	2.040	-	4.13	-	2.49	-	0.43	-
1.250	1.915	2.000	-	2.270	-	4.33	-	2.62	-	0.43	-
1.375	2.040	2.125	2.875	2.420	3.020	4.50	5.12	2.74	3.50	0.43	0.55
1.375 (CQS)	1.965	2.000	-	2.420	-	4.50	-	2.74	-	0.43	-
1.500	2.165	2.250	-	2.500	-	4.50	-	2.87	-	0.55	-
1.625	2.290	2.380	-	2.630	-	4.85	-	3.00	-	0.55	-
1.750	2.453	2.500	3.500	2.810	3.750	5.42	6.50	3.23	4.41	0.67	0.71
1.875	2.557	2.630	3.560	3.000	3.810	5.42	6.50	3.35	4.41	0.65	0.71
2.000	2.682	2.750	-	3.190	-	5.54	-	3.38	-	0.65	-
2.125	2.807	2.880	3.875	3.440	4.250	5.83	7.16	3.83	5.00	0.71	0.71
2.250	2.940	3.000	-	3.560	-	5.83	-	3.95	-	0.71	-
2.375	3.065	3.125	-	3.590	-	5.83	-	4.08	-	0.71	-
2.500	3.190	3.250	4.500	3.810	4.750	6.49	7.77	4.20	5.38	0.71	0.71
2.625	3.560	3.630	4.550	3.930	4.880	6.45	6.98	4.33	5.50	0.71	0.71
2.750	3.609	3.750	4.450	4.440	4.560	7.00	7.89	4.45	5.63	0.71	0.71

Metric Series

D1 h6	D3 Ref	D6 Min	D6 Max	F Ref	S Ref	W Ref
25	42.3	44.5	51.1	104.9	60.1	11.0
28	45.5	47.6	51.8	104.9	63.2	11.0
30	45.0	46.0	53.0	110.0	66.5	11.0
35	51.8	54.0	61.5	114.3	69.6	11.0
38	55.0	57.2	63.5	114.3	72.9	14.0
40	58.2	60.5	66.8	123.2	76.2	14.0
45	62.3	63.5	71.4	137.7	82.0	17.0
50	68.1	69.9	81.0	140.7	85.9	16.5
55	71.2	72.5	80.0	149.0	91.0	18.0
60	77.9	80.0	93.3	165.1	103.6	18.0
65	81.0	83.0	96.5	171.5	106.7	18.0
70	95.0	97.0	103.0	178.0	113.0	18.0

Other sizes available upon request



Ettem Engineering SA Ltd

Gevasol Group

POBox 442, Acco 2410302, Israel

Phone: 972-4-9810251

ettemeng@ettem.com

www.ettem.com